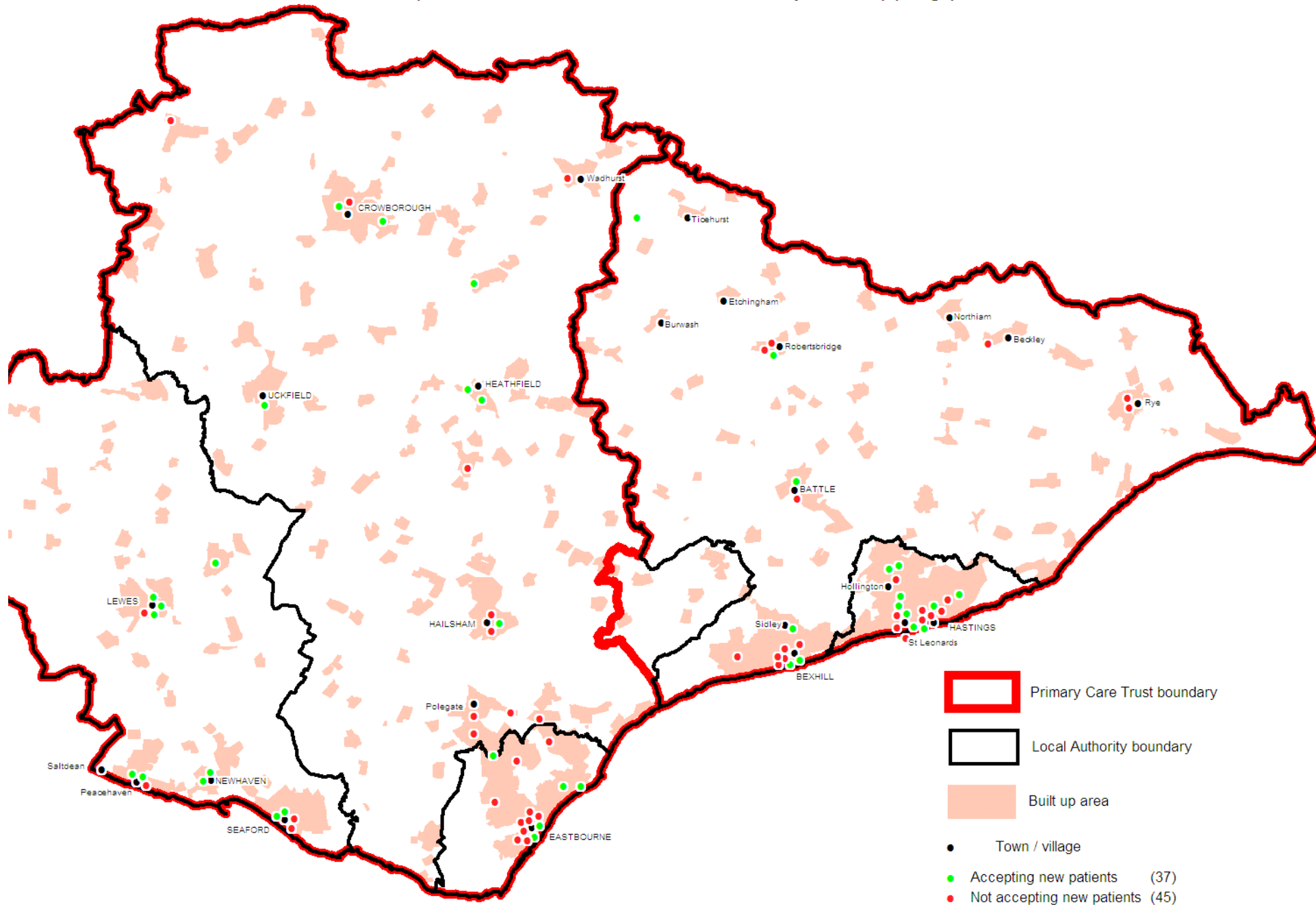


SPECIAL CARE DENTAL SERVICE WAITING TIMES

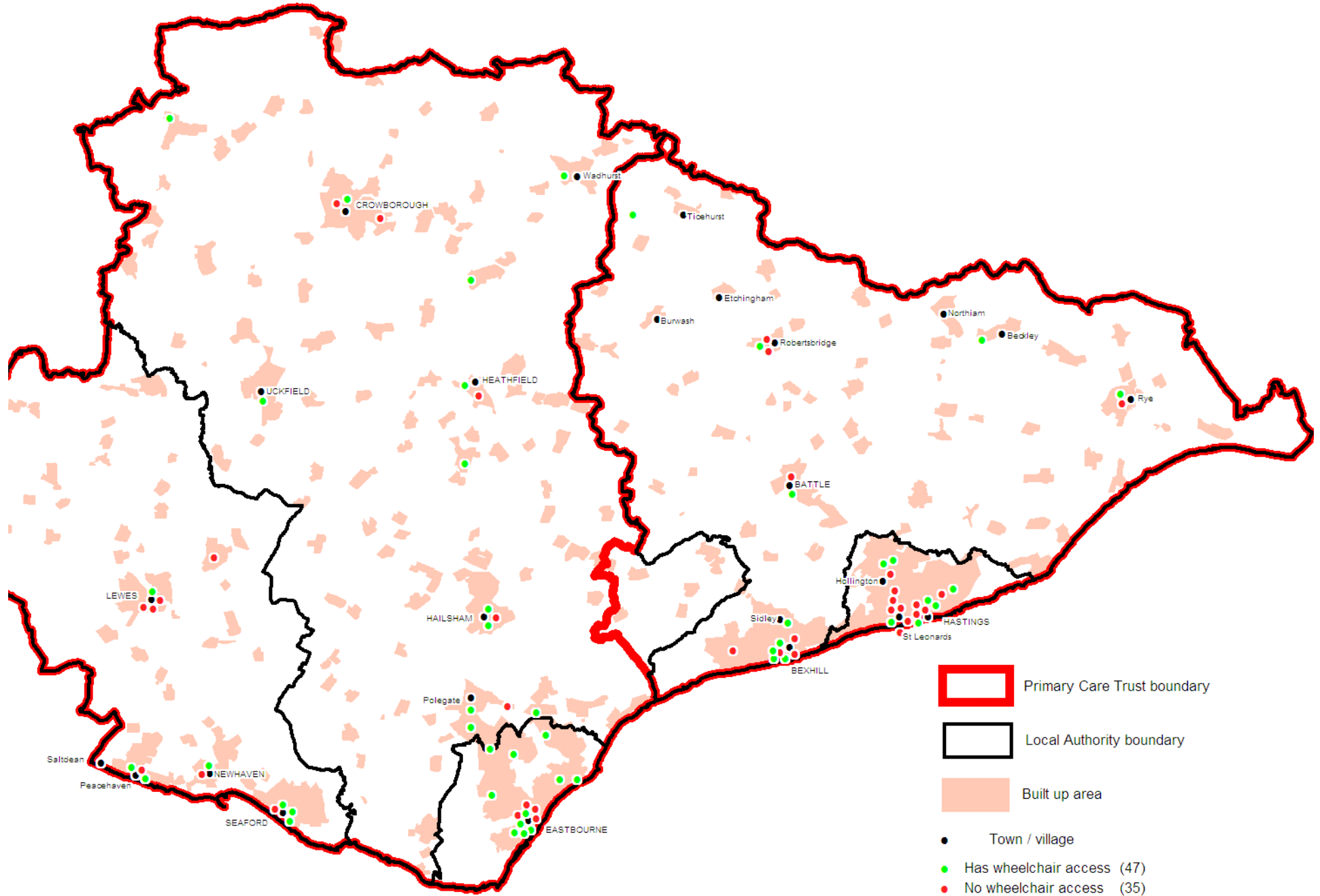
Dental Service	Waiting time (maximum in weeks)	
	end 2007	current
Dental Clinics	40	7
General Anaesthetic	37	18
Domiciliary	25	13

GP practices in East Sussex accepting new patients, November 2009

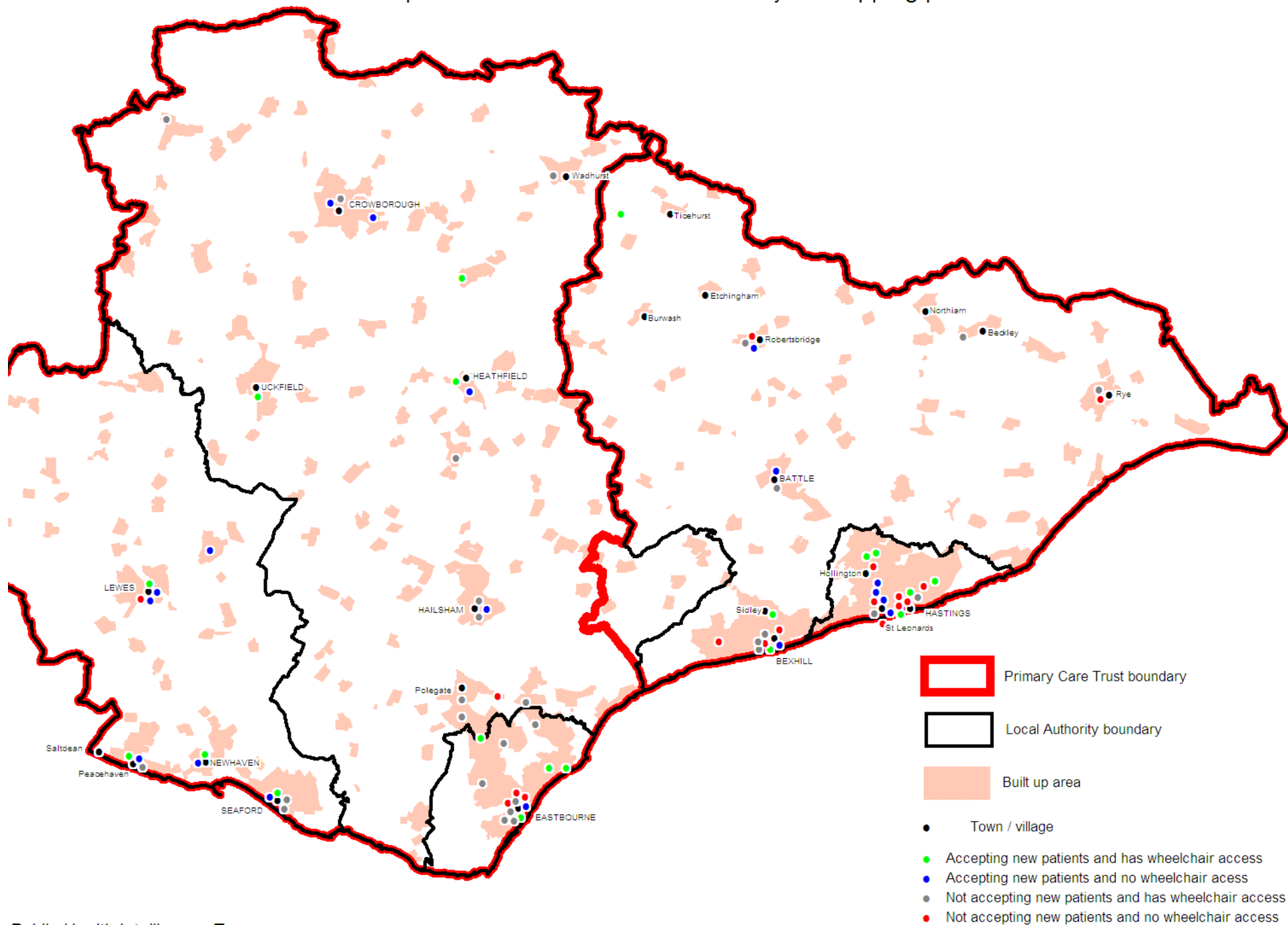
Practice locations not exact as some points have been moved to identify overlapping points



Practice locations not exact as some points have been moved to identify overlapping points



GP practices in East Sussex with wheelchair access and accepting new patients, November 2008
Practice locations not exact as some points have been moved to identify overlapping points



Progress in General Dental Services

- Increase in
 - Capacity
 - DDA compliance
 - Practice hours offered
 - Practices accepting new NHS patients
- Promotion of dental helpline
- Support for clinical governance
- Oral health needs analysis & plan

Next steps

- More tenders to increase general capacity
- Targets by 2011 for HRPCT
 - from 61% to 67% population
 - Extra 27,700 UDAs
 - Extra 10695 unique patients
 - About 5 dentists, 4 locations
- Targets by 2011 for ESDW PCT
 - From 57% to 60% population
 - Extra 45,000 UDAs
 - Extra 16,000 unique patients
 - About 7 dentists, 4 locations

Next steps (2)

- Continue to monitor contracts
 - Improved information; vital signs, clinical data
- Monitor Dental helpline
- Develop specialty services
- Emergency Dental Services Review